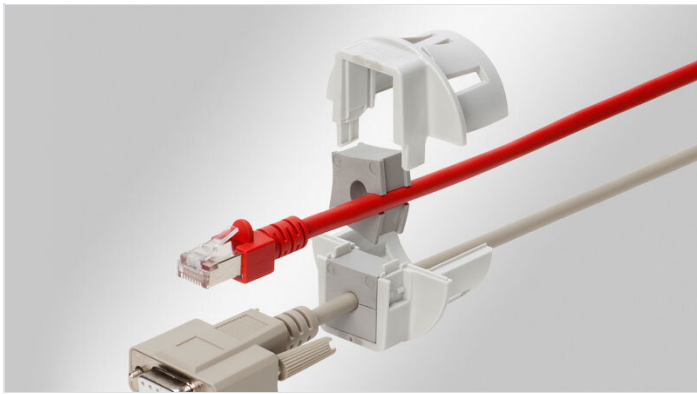


QVT-CLICK split cable gland for snap-in mounting

for cables with connectors, M16 - M50 / IP54



IP54

HL3
EN 45545-2

ECOLAB
certified

PNEUMATICS

RoHS
compliant

REACH
COMPLIANCE

Made in
Germany

QVT-CLICK is a circular split frame for quick and easy installation of pre-terminated cables or complete cable harnesses. But also electric, pneumatic or hydraulic lines without terminals or connectors as well as corrugated conduits can be easily routed and sealed with IP54. Because of its extremely compact design, the QVT-CLICK range is especially suitable for small machines, devices and instruments.

The cable glands are easy to install. The prefabricated cable is placed into the slit grommet which is set into one of the gland halves. Depending on the size of the cable gland, one, two or four separate grommets can be installed. By using multi-hole grommets up to 16 lines can be routed with one cable gland.

The QVT-CLICK can be assembled without tools from the front side of the enclosure wall. Sizes QVT-CLICK 16, QVT-CLICK 20, QVT-CLICK 40|1 and QVT-CLICK 50 can be also screwed with a locknut.

The QVT-CLICK Tool can be used for quick and easy mounting.

A sealing ring is included in the shipment.

Note:

Snap-in assembly QVT-CLICK 16 + 20 (wall thickness 1.5 - 2.5 mm)

Snap-in assembly QVT-CLICK 25 + 32 + 40 + 50 (wall thickness 1 - 2.5 mm)

Specifications

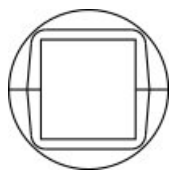
IP rating (EN 60529)	IP54
Material	Polycarbonate
Flame class	UL94-V0, self-extinguishing
Operating temperature	-30 C° to 100 C°
Mounting options	Snap-in

Advantages & Benefits

- Fast and easy mounting from the front side
- Space-saving shape
- Routing of cables with and without connectors
- Warranty on pre-terminated cables remains
- Retrofits, repairs and maintenance can be done much more easily and quickly
- Fast mounting by snapping into the cut-out
- Greatly increased cable density when using double or quadruple grommets

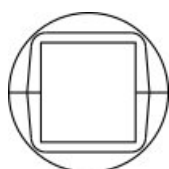
Product types & Sizes

QVT-CLICK 16 gy

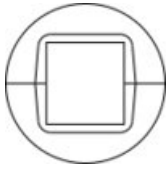


Part No.	45726	Mounting height	13,5 mm
EAN	4251269320552	Cut-out size, metric	M16
PU	10	Thread	M16 x 1,5
For max. no. of cables	1	Thread length	13 mm
Max. cable diameter	10 mm	For min. wall thickness	1,5 mm
Color	grau (ähnlich RAL 7035)	For max. wall thickness	2,5 mm
External diameter	32 mm	Suitable locknut	52272, 31105
		Suitable for grommets	1 x QT small

QVT-CLICK 20 gy

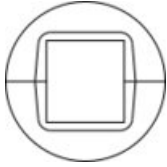


Part No.	45728	Cut-out size, metric	M20
EAN	4251269320569	Thread	M20 x 1,5
PU	10	Thread length	13 mm
For max. no. of cables	1	For min. wall thickness	1,5 mm
Max. cable diameter	11 mm	For max. wall thickness	2,5 mm
Height	27,8 mm	Suitable locknut	52273, 31110
Mounting height	13,5 mm	Suitable for grommets	1 x QT small

QVT-CLICK 25 gy

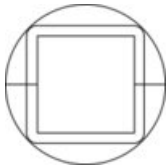
Part No. **45730**
 EAN **4251269311529**
 PU **10**
 For max. no. of cables **1**
 Max. cable diameter **15 mm**
 Color **grau (ähnlich RAL 7035)**
 External diameter **39 mm**

Mounting height **13,5 mm**
 Cut-out size, metric **M25**
 For min. wall thickness **1 mm**
 For max. wall thickness **2,5 mm**
 Suitable for grommets **1 x QT small**

QVT-CLICK 32 gy

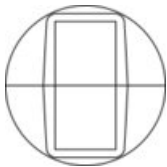
Part No. **45732**
 EAN **4251269311536**
 PU **10**
 For max. no. of cables **2**
 Max. cable diameter **15 mm**
 Color **grau (ähnlich RAL 7035)**
 External diameter **39 mm**

Mounting height **13,5 mm**
 Cut-out size, metric **M32**
 For min. wall thickness **1 mm**
 For max. wall thickness **2,5 mm**
 Suitable for grommets **1 x QT small**

QVT-CLICK 40-1 gy

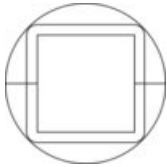
Part No. **45736**
 EAN **4251269323973**
 PU **10**
 For max. no. of cables **1**
 Max. cable diameter **29 mm**
 Color **grau (ähnlich RAL 7035)**
 External diameter **50 mm**

Mounting height **13,5 mm**
 Cut-out size, metric **M40**
 Thread **M40 x 1,5**
 Thread length **20 mm**
 For min. wall thickness **1 mm**
 For max. wall thickness **2,5 mm**
 Suitable locknut **52276, 45107, 31130**
 Suitable for grommets **1 x QT large**

QVT-CLICK 40-2 gy

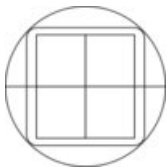
Part No. **45734**
 EAN **4251269311543**
 PU **10**
 For max. no. of cables **4**
 Max. cable diameter **15 mm**
 Color **grau (ähnlich RAL 7035)**
 External diameter **50 mm**

Mounting height **13,5 mm**
 Cut-out size, metric **M40**
 For min. wall thickness **1 mm**
 For max. wall thickness **2,5 mm**
 Suitable for grommets **2 x QT small**

QVT-CLICK 50-1 gy

Part No. **45738**
 EAN **4251269323980**
 PU **10**
 For max. no. of cables **1**
 Max. cable diameter **29 mm**
 Color **grau (ähnlich RAL 7035)**
 External diameter **62 mm**

Mounting height **22 mm**
 Cut-out size, metric **M50**
 Thread **M50 x 1,5**
 Thread length **20 mm**
 For min. wall thickness **1 mm**
 For max. wall thickness **2,5 mm**
 Suitable locknut **52277, 45108, 31140**
 Suitable for grommets **1 x QT large**

QVT-CLICK 50-4 gy

Part No. **45740**
 EAN **4251269323997**
 PU **10**
 For max. no. of cables **16**
 Max. cable diameter **15 mm**
 Color **grau (ähnlich RAL 7035)**
 External diameter **62 mm**

Mounting height **22 mm**
 Cut-out size, metric **M50**
 Thread **M50 x 1,5**
 Thread length **20 mm**
 For min. wall thickness **1 mm**
 For max. wall thickness **2,5 mm**
 Suitable locknut **52277, 45108, 31140**
 Suitable for grommets **4 x QT small**

QVT-CLICK Tool



Part No.
EAN
PU

61435
2

□